

# CRANE CREEK

LYING IN SECTION 12, TOWNSHIP 38 SOUTH

# RACQUET CLUB - PHASE 1

RANGE 40 EAST, MARTIN COUNTY, FLA.

FEBRUARY, 1986

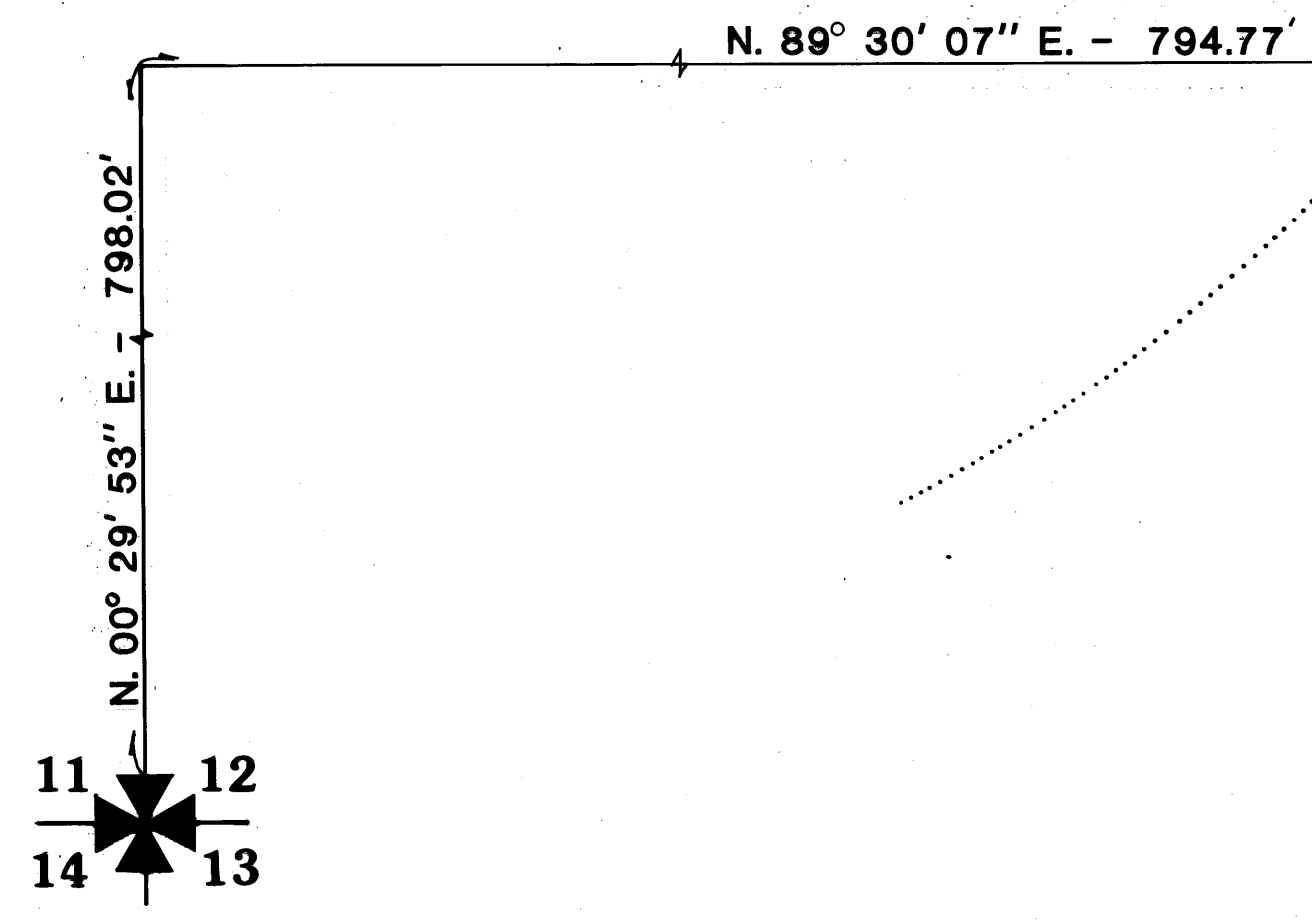
CRANE CREEK RACQUET CLUB, PHASE 6  
PLAT BOOK 7, PAGE 102  
MARTIN COUNTY, FLA

CRANE CREEK RACQUET CLUB, PHASE 6  
PLAT BOOK 7, PAGE 102  
MARTIN COUNTY, FLA

CRANE CREEK RACQUET CLUB, PHASE 5  
PLAT BOOK 7, PAGE 101  
MARTIN COUNTY, FLA.

NOTE:

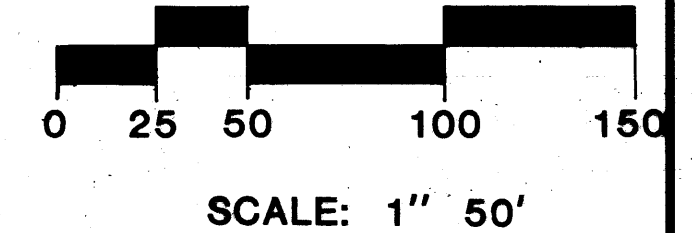
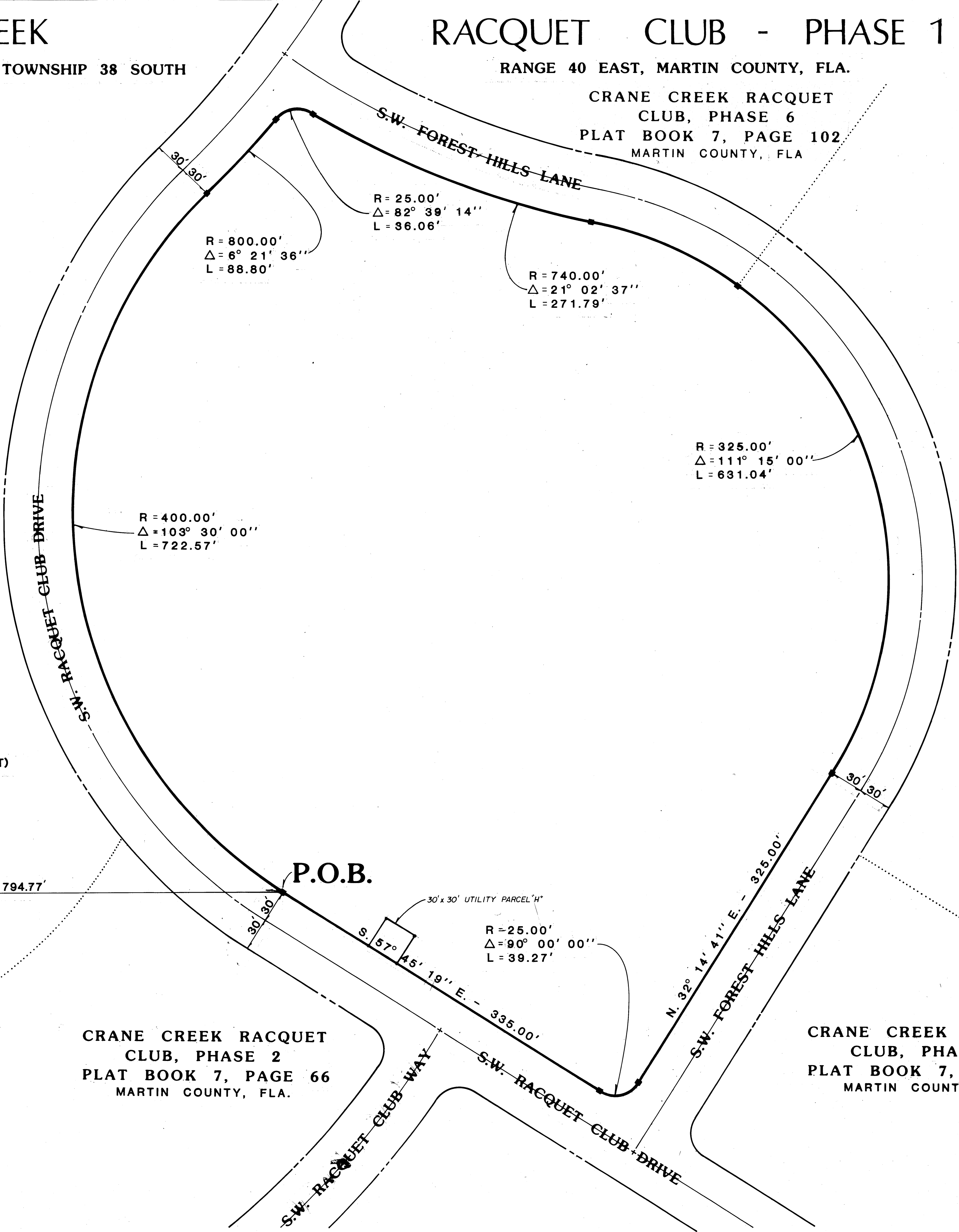
■ FOUND P.R.M. (PERMANENT REFERENCE MONUMENT)



CRANE CREEK RACQUET CLUB, PHASE 2  
PLAT BOOK 7, PAGE 66  
MARTIN COUNTY, FLA.

CRANE CREEK RACQUET CLUB, PHASE 2  
PLAT BOOK 7, PAGE 66  
MARTIN COUNTY, FLA.

P.O.B.



I, LOUISE V. ISAACS,  
CLERK OF THE CIRCUIT  
COURT OF MARTIN COUNTY,  
FLORIDA, HEREBY CERTIFY  
THAT THIS PLAT WAS FILED  
FOR RECORD IN PLAT  
BOOK 10, PAGE 24,  
MARTIN COUNTY, FLORIDA,  
PUBLIC RECORDS, THIS  
DAY OF \_\_\_\_\_,  
A.D., 1986.

LOUISE V. ISAACS, CLERK  
CIRCUIT COURT  
MARTIN COUNTY, FLORIDA

BY \_\_\_\_\_  
DEPUTY CLERK

FILE NO. \_\_\_\_\_